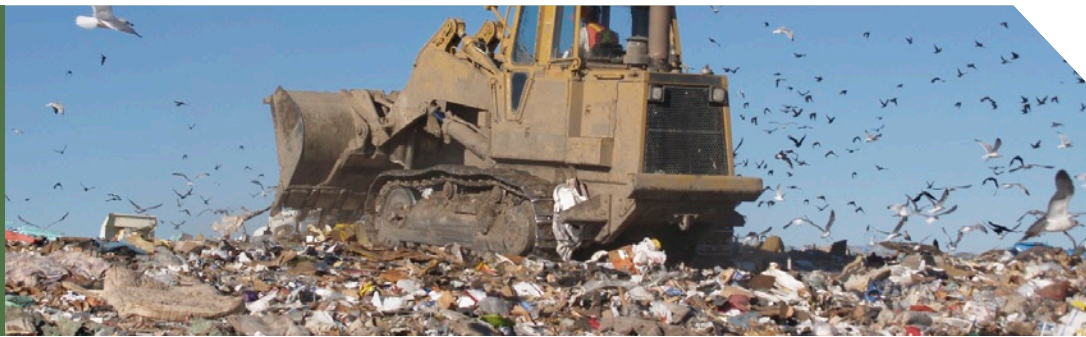


PASCO COUNTY LANDFILL ISSUE



The Problem:

Angelo's Aggregate Materials wants to put a 90-acre private landfill in East Pasco County, between the Hillsborough and Withlacoochee Rivers and the Green Swamp. Allowing this landfill would be a regional mistake. It threatens our water supply, our economy, our environment, and our families. Pasco County already has an expandable waste management program that has proven successful for more than 15 years. Why switch paths now and put East Pasco and the entire Tampa Bay region at risk?

A Class 1 landfill would put the entire region at risk.

- Sinkholes are common to Pasco. If one formed below the proposed landfill, toxic leachate could cause widespread contamination in the Hillsborough River, Withlacoochee River, and Green Swamp. This would put our regional water supply, in grave danger.
- According to the Harvard School of Public Health, landfills like the one proposed produce 115 times more greenhouse gases, like carbon-dioxide and methane, than waste-to-energy plants. Pasco County currently operates a waste-to-energy facility in Shady Hills.

A Class 1 landfill would have immediate effects on the economy, environment, and residents.

- Land values would be depreciated to a level that has yet to be determined. Even the value of the site proposed for the landfill has already depreciated by more than 30 percent.
- Hundreds of trucks would suddenly be racing down

our roads to and from the site. This would put our children, pets, and wildlife at an unnecessary risk.

- Trash from the pile could be blown or distributed by birds to the surrounding natural areas creating the potential for wildlife disease and injury. Many non-biodegradable materials could be eaten, causing wildlife to starve as the materials are stuck inside or just kill them outright.

Waste-to-Energy is a Far Better Plan

Pasco County already determined the way it wanted to handle this issue when they built the current Pasco County Waste-to-Energy facility in 1991, the plan was to create an expandable system that could serve the county for years to come. Since then, the waste-to-energy facility has:

- Reduced solid waste volume by 90 percent.
- Generated electricity for 15,000 homes a year.
- Earned \$15 million in annual revenue, which is used to offset nearly 50 percent of the operating costs for the facility.

This well-planned system processes up to 1,050 tons of garbage a day. An expansion would process an additional 550 tons per day. The result would be a 50 percent increase in the amount of electricity, and an estimated \$7.5 million in additional revenues from the sale of that electricity.

The bottom line is that Pasco County simply can't afford to turn its back on a system that has already proven its worth! We have too much to lose and nothing to gain by putting a Class 1 landfill in East Pasco County.